

Stainless Steel Railing Systems.





Mission Statement

We will manufacture and supply pre-assembled stainless steel and glass railing systems of an unsurpassed quality and unrivalled price to satisfied clients worldwide.



A b o u t U s

Steel Studio USA specialises in the design, manufacture and installation of premier quality and functional stainless steel railing systems.

Headquartered in Northern California, Steel Studio USA's president and founder has managed the manufacture and installation of hundreds of miles of custom made stainless steel railings in the construction industry worldwide.

Our range of patented stainless steel and glass railing systems are manufactured and supplied to global destinations.

Drawing on vast in-house experience in stainless steel production, we can provide valuable input to product development. Every item is manufactured to the specific requirements of the client ensuring systems are suitable for the intended application.

The railing systems are supplied in pre-assembled panels to custom sizes and no on-site cutting, welding or grinding is required. Great pride is taken in upholding quality workmanship and only making use of first-rate materials.

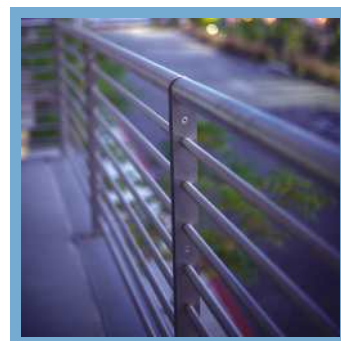
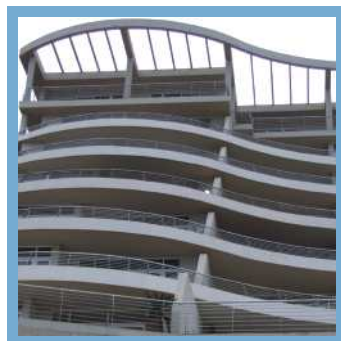
The larger commercial projects are, without question, where our expertise lies. Airports, multi-storey condominiums, hotels, shopping malls, stadiums and hospitals are an ideal match for our product.

Our design facility and estimating capabilities enable our participation in major construction projects.

We endeavor to deliver world class products and service, at an unrivalled value. All our designs either meet or exceed the latest IBC codes.

Steel Studio USA is committed to sustainability and a greener future, creating a product which is 100% recyclable, and manufactured from 75%-85% recycled material. By simply selecting stainless steel over non-recyclable alternatives, companies and individuals are taking an active step toward reducing their carbon footprint.

Prized for its durability, strength and corrosion resistance, stainless steel has become the metal of choice in the building and construction industry world wide. The natural reflectivity of stainless steel allows it to blend into any interior, reflecting the colors and textures of it's surroundings. Our stainless steel requires little maintenance, ensuring that the product will last for generations.





Horizontal Railing System

Stylish, functional and architecturally pleasing products are a passion at Steel Studio USA. We offer a contemporary range of stainless steel horizontal railing systems in a broad portfolio of designs. These railing systems are used for varied applications such as balcony railings, guardrails and many more.



- Panels are pre-assembled and manufactured to custom lengths.
- Maximum span of 6'-0" (1 829mm) from center to center of posts.
- The system comprises of two vertical flat bars 2-1/2" (63.5mm) wide x 5/16" (8mm) thick at each end.
- The panel is made up of eight 1" (25.4mm) O.D x 0.053" (1.35mm) wall horizontal rails.
- Completing the panel is a 2 - 1/2" (63.5mm) O.D. x 0.053" (1.35mm) wall top rail.
- The top six horizontal rail ends are tapped M8 (5/16") and mechanically fastened to the vertical flat bars using M8 (5/16") cap screws.
- The bottom two rails are fastened using countersunk Allen cap screws.
- All railing systems are designed to meet the current International Building Code.



Corner Panels

- All corner panels are welded mitred joints.
- Overall size is standard 1'-0" x 1'-0" (304.8mm).







Vertical Railing System

Stainless Steel railing systems are ideal for harsh caustic exterior environments and are aesthetically pleasing to any structure. Steel Studio USA is committed to providing customers with affordable products of the highest quality.



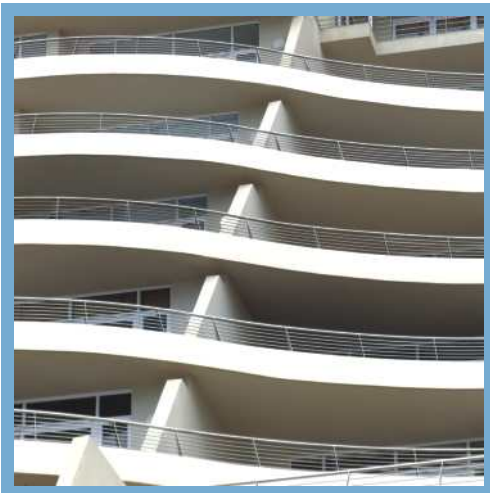
- Panels are pre-assembled and manufactured to custom lengths.
- Maximum span of 6'-0" (1829mm) center to center of posts.
- Comprising of two vertical flat bars 2-1/2" (63.5mm) wide x 5/16" (8mm) thick at each end. Two 1.57" x 0.787" (40mm x 20mm) x 0.053" (1.35mm) wall top and bottom rectangular horizontal rails drilled to receive 3/4" vertical rails.
- 2-1/2" (63.5mm) O.D. x 0.053" (1.35mm) wall top rail.
- 3/4" (19.05mm) vertical rails at centers not exceeding 3-3/4" (95mm).
- Top horizontal rail ends are tapped M8 (5/16") and mechanically fastened to vertical flat bars with M8 (5/16") Cap Screws, while the bottom horizontal rail is fastened with countersunk Allen Cap Screws.
- All railing systems are designed to meet the current International Building Code.



Corner Panels

- All corner panels are welded mitred joints.
- Overall size is standard 1'-0" x 1'-0" (304.8mm).







Glass Railing System

Create, view and define your ideal space by using our range of Glass Railing Systems. The combination of glass and Stainless Steel permits spectacular ways of light entry as well as aesthetically pleasing reflections thus creating a structure that is visually appealing and complimentary to any building.



Straight glass panels:

- Panels are pre-assembled and manufactured to custom lengths.
- A maximum span of 6'-0" (1 829mm) from center to center of posts for 27 PSF Wind Load.
- A maximum span of 5'-6" (1 676mm) from center to center of posts for 30 PSF Wind Load.
- A maximum span of 5'-0" (1 524mm) center to center of posts for 33 PSF Wind Load.
- A maximum span of 4'-6" (1 372mm) center to center of posts for 37 PSF Wind Load.
- A maximum span of 4'-0" (1 219mm) center to center of posts for 41 PSF Wind Load.
- The structure comprises two vertical flat bars 2 - 1/2" (63.5mm) wide x 5/16" (8mm) thick at each end.
- One 1" (25.4mm) O.D. x 0.053" (1.35mm) wall horizontal kick rail strengthens the system.
- A 2 - 1/2" (63.5mm) O.D. x 0.053" (1.35mm) wall top rail.
- All railing systems are designed to meet the current International Building Code.



Corner panels:

- All corner panels are welded mitred joints.
- Overall standard size is 1' - 0" x 1' - 0" (304.8mm).
- All glass brackets may be rotated 180 degrees to incorporate either an external or internal corner.
- All other technical specifications are as stated above under straight glass panels.







Specifications & Components

Our team of dedicated professionals are driven to provide superior workmanship utilizing the most technologically advanced machinery in accordance with rigorous quality control systems.



Stem & Base Plates

- We have three standard methods of attaching the railing systems:

1. Base plate fix
2. Face mount fix
3. Core drill fix

- All fixings incorporate a 1/2" vertical height adjustment to all fixings to assist with levelling in the installation process.



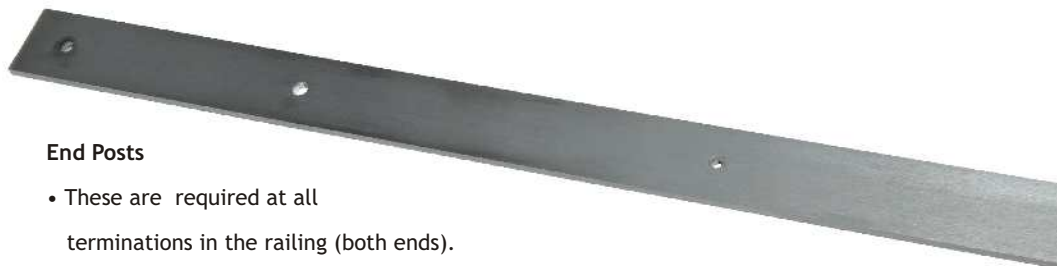
Interlocking Connections

- Two number 5/8" (16mm) Diameter x 55/64" (22mm) long interlocking connection pieces with four 5/16" (M8) Cap Screws are required to link panels together.



End Posts

- These are required at all terminations in the railing (both ends).





Glass

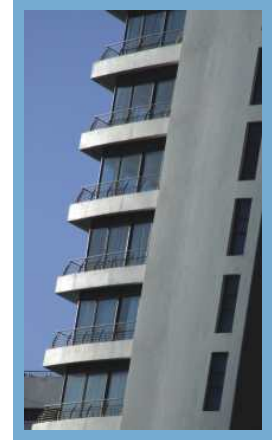
- Minimum 0.472 (12mm) thick fully tempered/toughened with polished edges.

Fasteners

- Shall be stainless steel.

Finish

- All stainless steel is brushed to a fine number 4 finish (approximately 240 Grit). Circular sections are circumferentially brushed and the balance of the components are longitudinally brushed.



Grade of Stainless Steel

- Available in Grade 304 in areas experiencing minimal corrosion and Grade 316 in highly corrosive areas. Tubing, plate and castings are manufactured in accordance with the American Society For The Testing Of Metals (ASTM).

Loading

- System meets or exceeds the requirements of the current International Building Code.

3 Part Specs

- For our 3 Part Specs, please email your request to info@steelstudiousa.com or call our offices at 415 888 8613.

Google SketchUp 3D Models and AutoCAD details

- See our website www.steelstudiousa.com for downloads.





Steel Studio USA Inc.
PO Box 637
Mill Valley
CA, 94942

Tel: 415 888 8613
Fax: 415 388 2982
Email: info@steelstudiousa.com
Web: www.steelstudiousa.com